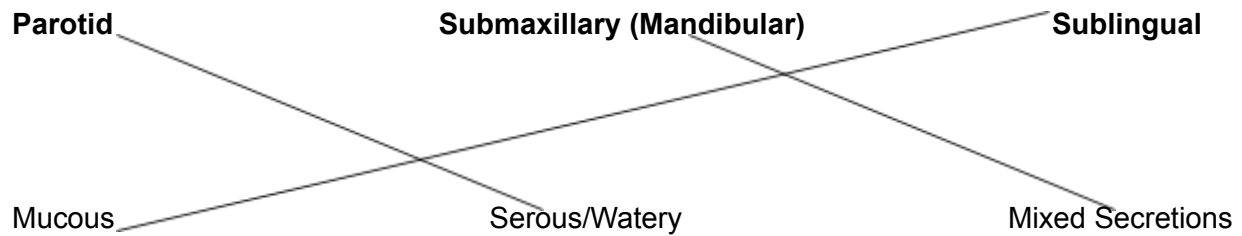
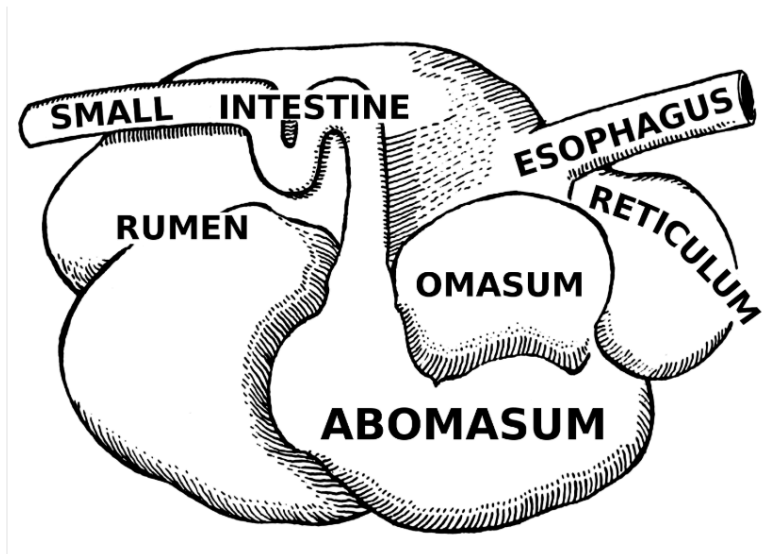


Ruminants

1) Match the Salivary Gland with its secretion type



2) Label the 4 Compartments of the Ruminant Stomach



3) Match the function of each compartment

- | | |
|--------------|---------|
| 1. Abomasum | ___C___ |
| 2. Rumen | ___B___ |
| 3. Omasum | ___D___ |
| 4. Reticulum | ___A___ |

A: Move Undigested feed into the Rumen and Omasum, Regurgitation, Traps Hardware

B: Physical mixing and breakdown, fermentation chamber, storage, soaking

C: Functions similar to monogastric stomach, acid & enzyme secretion

D: Muscular laminae studded with papillae, reduces particle size of digesta, water absorption

Ruminants

4) List the 6 favorable Conditions for Microbes

- 1) Constant Temperature
- 2) Constant pH (5.5-7.0) - buffered
- 3) Motility - mixing of digesta
- 4) End products removed
- 5) No humoral defense mechanisms
- 6) Continuous nutrient supply

5) What are the 2 negative aspects of microbes?

- 1) Require No oxygen - anaerobic
- 2) Feed may be limiting

6) What are the 5 steps to Rumination?

- 1) Regurgitation
- 2) Swallow liquid
- 3) Remastication
- 4) Resalivation
- 5) Reswallowing