

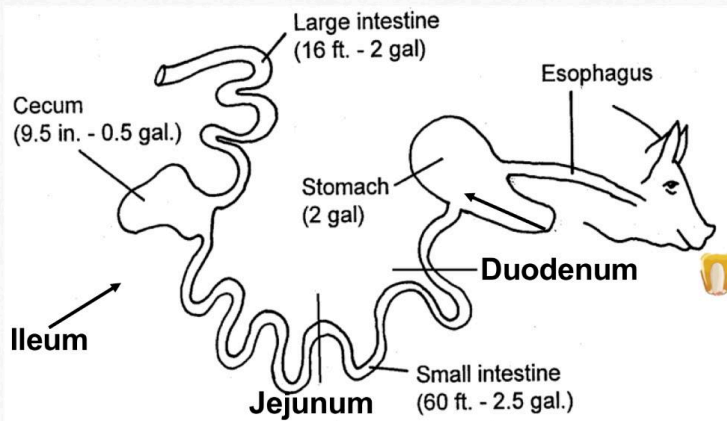
Foregut (30–40% of digestion)

1. **Mouth** – Chewing and saliva begin digestion.
2. **Esophagus** – Moves food to the stomach.
3. **Stomach** – Acidic digestion begins; small capacity.
4. **Small intestine** – Duodenum, jejunum, ileum; digestion and absorption of nutrients.

Hindgut (60–70% of digestion)

5. **Cecum** – Fermentation of fibrous material by microbes.
6. **Large colon** – Water absorption and microbial fermentation continue.
7. **Small colon** – Absorption of water and formation of feces.
8. **Rectum / Anus** – Excretion of waste.

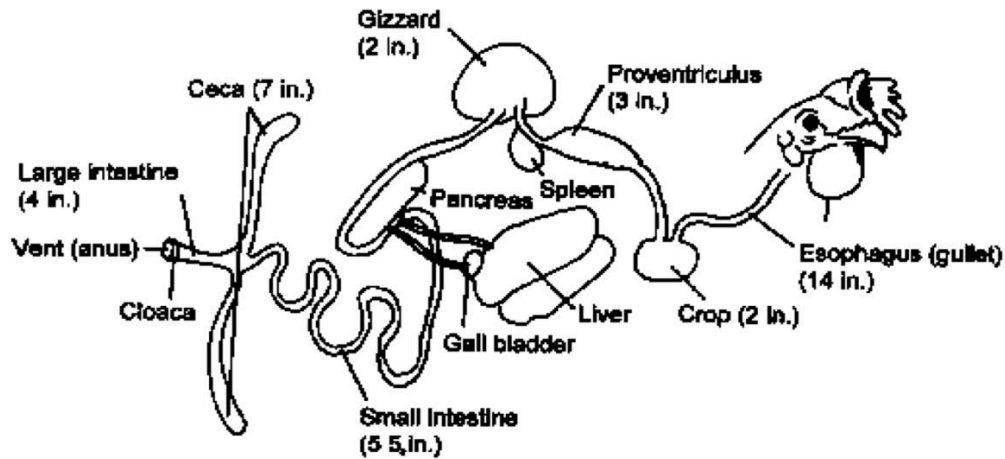
Digestive System of the Pig



Pig Digestive System

1. **Mouth** – Chewing and saliva begin digestion.
2. **Esophagus** – Transports food to the stomach.
3. **Stomach** – Acidic digestion of proteins begins.
4. **Small intestine** – Duodenum, jejunum, ileum; digestion and absorption of nutrients.
5. **Cecum** – Minor fermentation of fibrous materials.
6. **Large Intestine / Colon** – Water absorption and further fermentation.
7. **Rectum / Anus** – Excretion of feces.

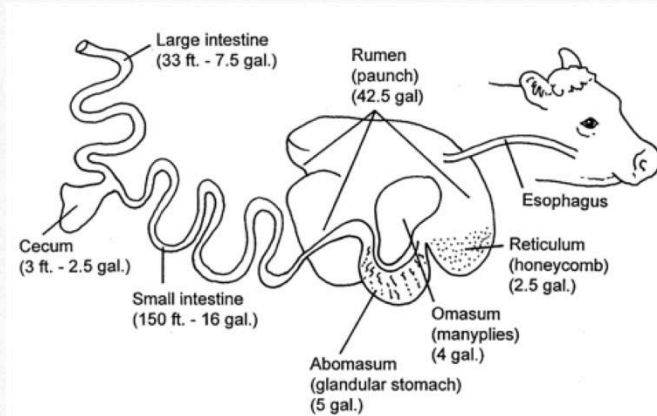
Avian Gastrointestinal System



Avian Digestive System

1. **Mouth / Beak** – Intake of food; no teeth for chewing.
2. **Esophagus** – Transports food to the crop.
3. **Crop** – Storage and softening of food; some fermentation may occur.
4. **Proventriculus** – “Glandular stomach”; secretes digestive enzymes and acids.
5. **Gizzard (Ventriculus)** – Muscular stomach; grinds food mechanically, often with ingested grit.
6. **Small intestine** – Duodenum, jejunum, ileum; digestion and nutrient absorption.
7. **Ceca (paired)** – Microbial fermentation of fiber; minor water absorption.
8. **Large intestine / Cloaca** – Water absorption; combines digestive, urinary, and reproductive outputs.
9. **Cloaca / Vent** – Excretion of waste (feces + urine) and reproductive products.

Ruminant Digestive System



Mouth – Chewing and salivation begin digestion.

Esophagus – Transports food to the stomach.

Rumen – Largest stomach compartment; fermentation and microbial digestion of fiber occur here.

Reticulum – Works with the rumen; traps foreign objects and forms cud for regurgitation.

Omasum – Absorbs water, electrolytes, and some nutrients.

Abomasum – “True stomach”; acidic digestion of proteins, similar to monogastric stomach.

Small intestine – Duodenum, jejunum, ileum; digestion and absorption of nutrients.

Cecum – Minor fermentation and absorption of some nutrients.

Large intestine / Colon – Water absorption and formation of feces.

Rectum / Anus – Excretion of waste.